

## Devonshire Road Colliers Wood, SW19 2EJ

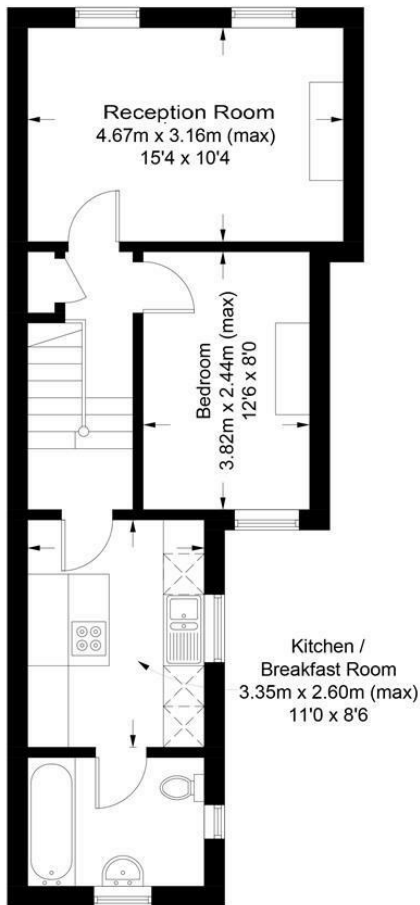
**£325,000 Leasehold**



**A first floor period conversion flat located on a highly sought after residential road moments from Colliers Wood Tube Station and Tooting Overground Station is offered to the market with no onward chain. This perfectly presented flat comprises of a fitted kitchen, bright and spacious separate reception, modern fully fitted bathroom and a great-sized bright double bedroom. This lovely property also comes with long lease and no onward chain so we urge you to book viewings early to avoid missing out.**

## Devonshire Road, SW19

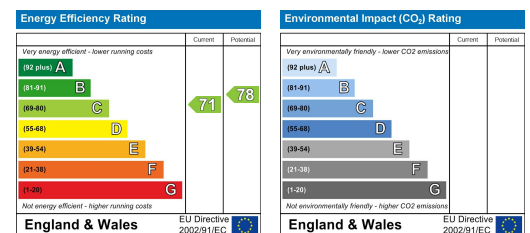
Approximate Gross Internal Area = 45.2 sq m / 486.6 sq ft



### First Floor

This floor plan is for representation purposes only and is not drawn to scale.  
**The Gross Internal Area includes outbuildings shown on the plan.**  
 Whilst every attempt has been made to ensure the accuracy of the plan measurements of doors, windows and rooms are approximate only and should be checked before making any decisions reliant upon them.  
 Copyright Bespokeplans.co.uk (ID788675)

- Period Conversion
- No Onward Chain
- One Double Bedroom
- Potential To Extend
- Long Lease
- Close To Tube and Mainline Stations
- Ideal First Time Purchase
- Tooting High Street Nearby



For Free Mortgage Quote and Best Mortgage Rates, call an Ellisons Mortgage Advisor on 020 8544 0518



Although these particulars are believed to be correct, their accuracy is not guaranteed and they do not form part of any contract.

Celebrating 30 years of successful Sales and Lettings in Merton

